



Luna SHP Profix 2 26x117

Also available: [Luna SHP Profix 2 26x140](#)

- Decay resistance class of 2 (durable)
- All Climates
- Dimensional stability
- Resin free
- Non toxic
- Sustainable wood product
- See Lunawood Thermowood Guideline
- See Lunawood Thermowood Interior Guideline

dimensions (mm)	26x117
1 m ²	8,13 m (6 mm GAP)
species	Nordic pine
class	LunaThermo-D
length (m)	3,0 / 3,6-5,4

Finnish Lunawood Thermowood is a beautiful wood material produced using natural methods, heat and steam. Thermowood is dimensionally stable, resistant to decay and non toxic. It can be used for interior and exterior applications. Lunawood is an eco-friendly natural product, which is easy to machine and install.



WWW.LUNAWOOD.COM

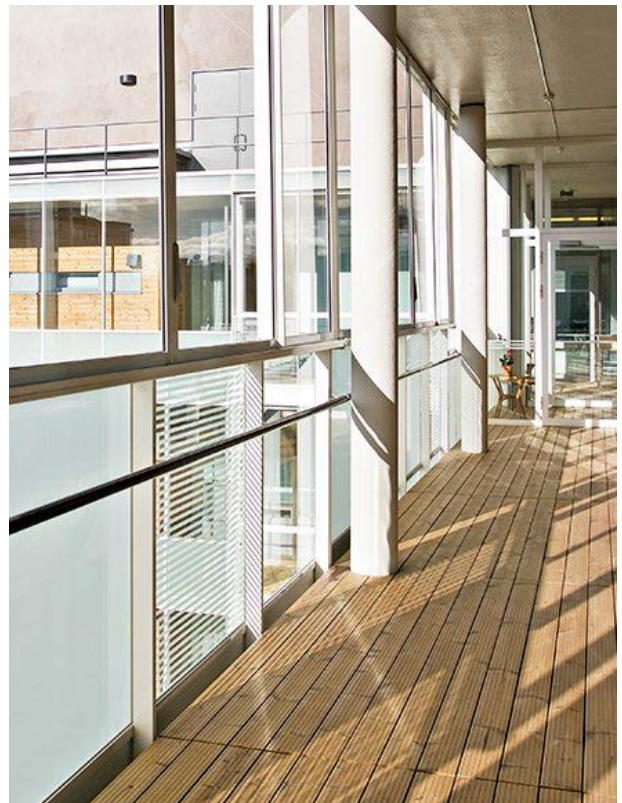


Luna Deck 2 Profix 2 26x117

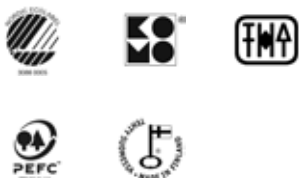
Also available: [Luna Deck 2 Profix 2 26x92](#)

- Easy to assemble with Profix 2 hidden fixing
- Decay resistance class of 2 (durable)
- All Climates
- Dimensional stability
- Resin free
- Non toxic
- Sustainable wood product

dimensions (mm)	26x117
class	LunaThermo-D
species	Scandinavian pine
length (m)	3,0/3,6-5,4



Finnish Lunawood Thermowood is a beautiful wood material produced using natural methods, heat and steam. Thermowood is dimensionally stable, resistant to decay and non toxic. It can be used for interior and exterior applications. Lunawood is an eco-friendly natural product, which is easy to machine and install.



WWW.LUNAWOOD.COM

This brochure is provided for information purposes only and no liability or responsibility of any kind is accepted by Lunawood or their representatives, although Lunawood has used reasonable efforts to verify the accuracy of any advice, recommendation or information. Lunawood reserves the right to alteration of its products, product information and product range without any notice.